

GWINNETT COUNTY
BOARD OF COMMISSIONERS

75 Langley Drive | Lawrenceville, GA 30046-6935

O: 770.822.7000 | F: 770.822.7097

GwinnettCounty.com

Nicole L. Hendrickson, Chairwoman

Kirkland Dion Carden, District 1

Ben Ku, District 2

Jasper Watkins III, District 3

Marlene M. Fosque, District 4

Official

Informal Presentation Minutes

Tuesday, November 15, 2022 – 3:00 PM

Present: Nicole L. Hendrickson, Kirkland Carden, Ben Ku, Jasper Watkins III, Marlene M. Fosque

1. Board of Commissioners

Navigate Recovery

Navigate Recovery Co-Founders Susan and Farley Barge, Gwinnett County Medical Examiner Dr. Carol Terry and GNR Public Health Chief Executive Officer Audrey Arona M.D, provided the Board with an overview of Navigate Recovery's mission and values, discussed Opioid casualties and drug hot spots, and highlighted potential solutions to decrease Opioid deaths. No official action taken.



Gwinnett

Gwinnett County Board of
Commissioners' 3:00pm
Informal Presentation

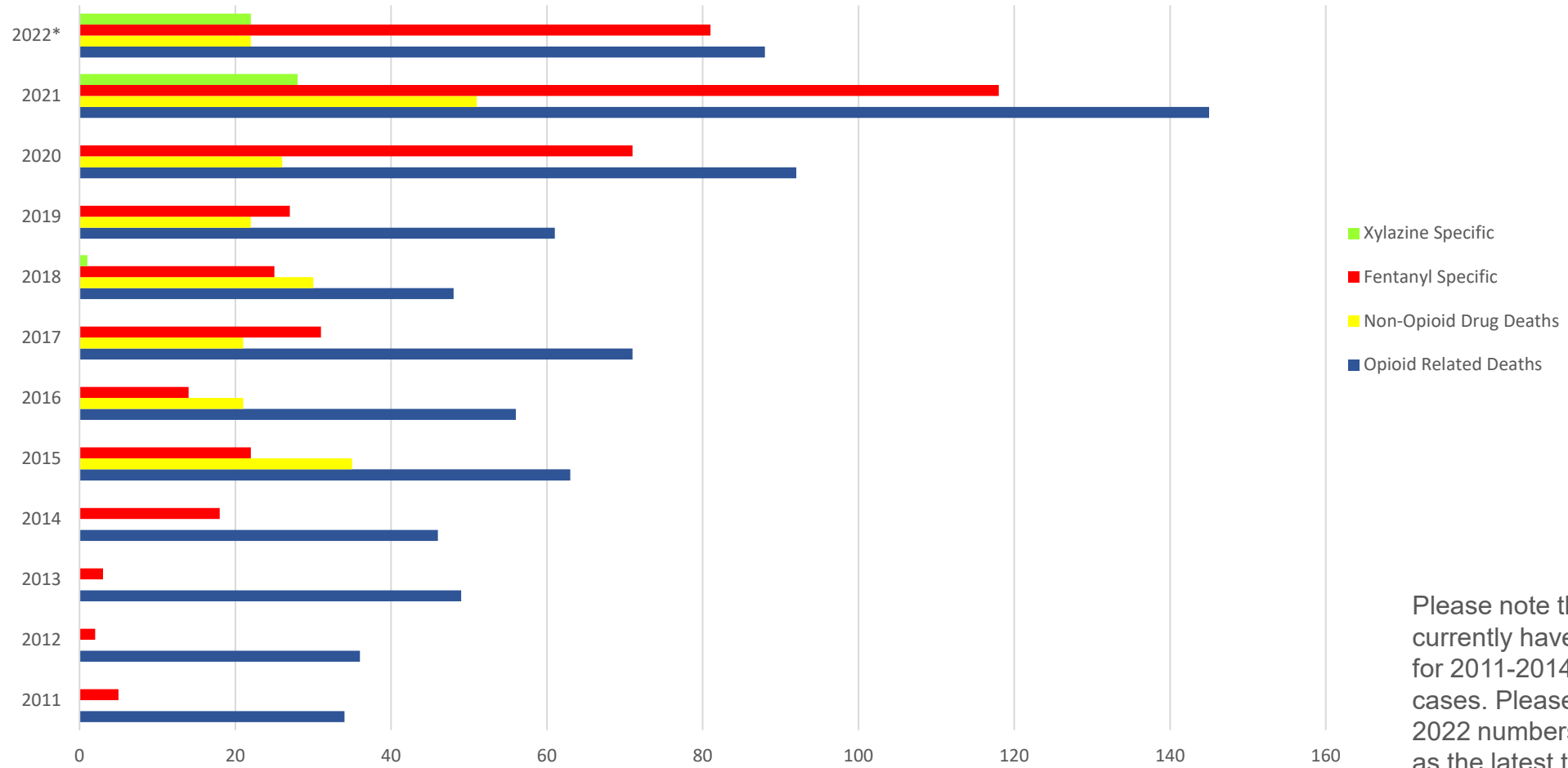
WHO WE ARE



OUR VISION is a community that treats addiction as a chronic condition and those affected with dignity and respect.

OUR MISSION is to serve individuals and families affected by addiction, connecting them to the resources they need and removing barriers that prevent them from getting and staying well.

2011-Present Gwinnett County Drug Related Deaths



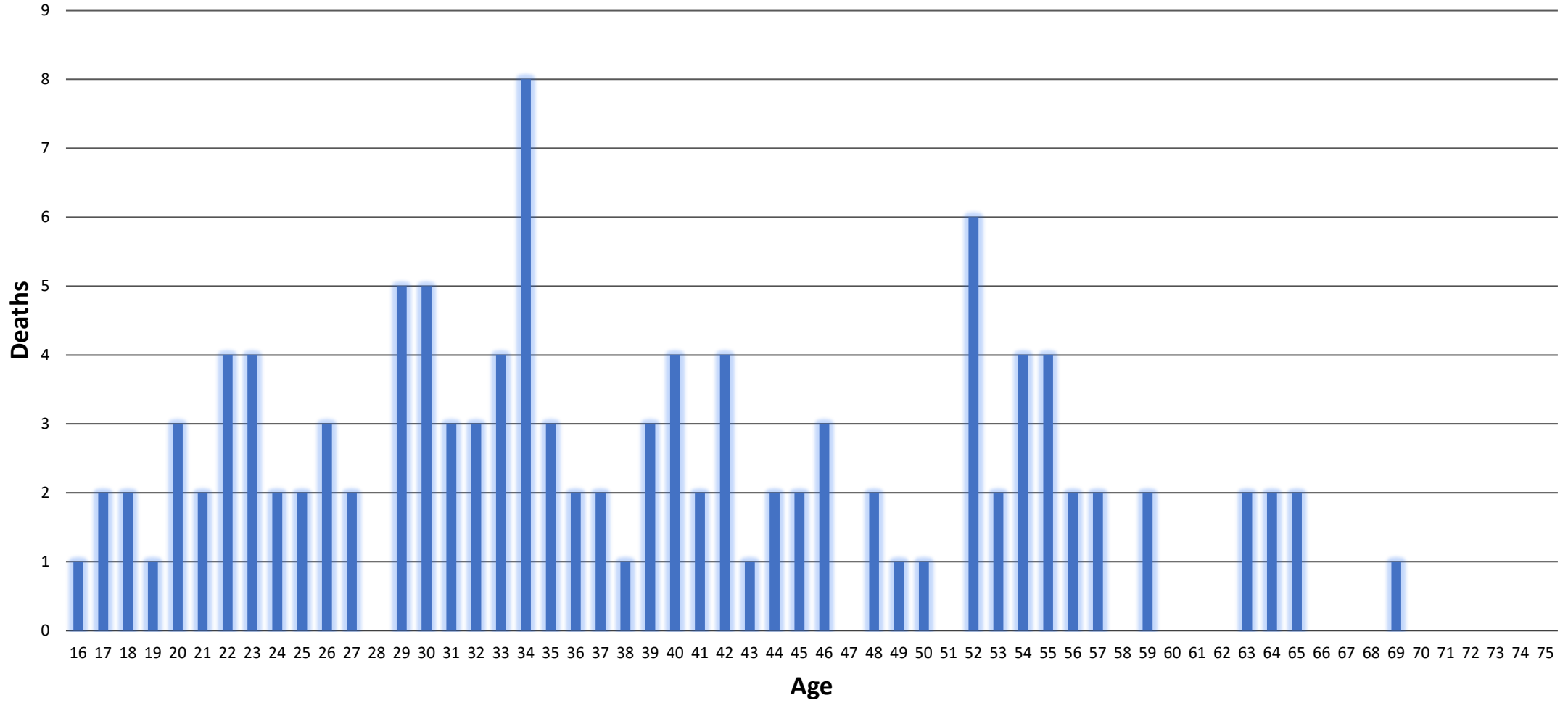
- Xylazine Specific
- Fentanyl Specific
- Non-Opioid Drug Deaths
- Opioid Related Deaths

Please note that we do not currently have specific numbers for 2011-2014 for "non opioid" cases. Please also note that 2022 numbers are only as good as the latest toxicology results received and that there are currently 52 "uncertified" cases that had positive screens or suspicious circumstances that are currently pending toxicology results.

	2011	2012	2013	2014	2015	2016	2017	2018	2019	2020	2021	2022*
■ Xylazine Specific	0	0	0	0	0	0	0	1	0	0	28	22
■ Fentanyl Specific	5	2	3	18	22	14	31	25	27	71	118	81
■ Non-Opioid Drug Deaths	0	0	0	0	35	21	21	30	22	26	51	22
■ Opioid Related Deaths	34	36	49	46	63	56	71	48	61	92	145	88

Fentanyl Deaths by Age (certified & uncertified)

■ Fentanyl Deaths



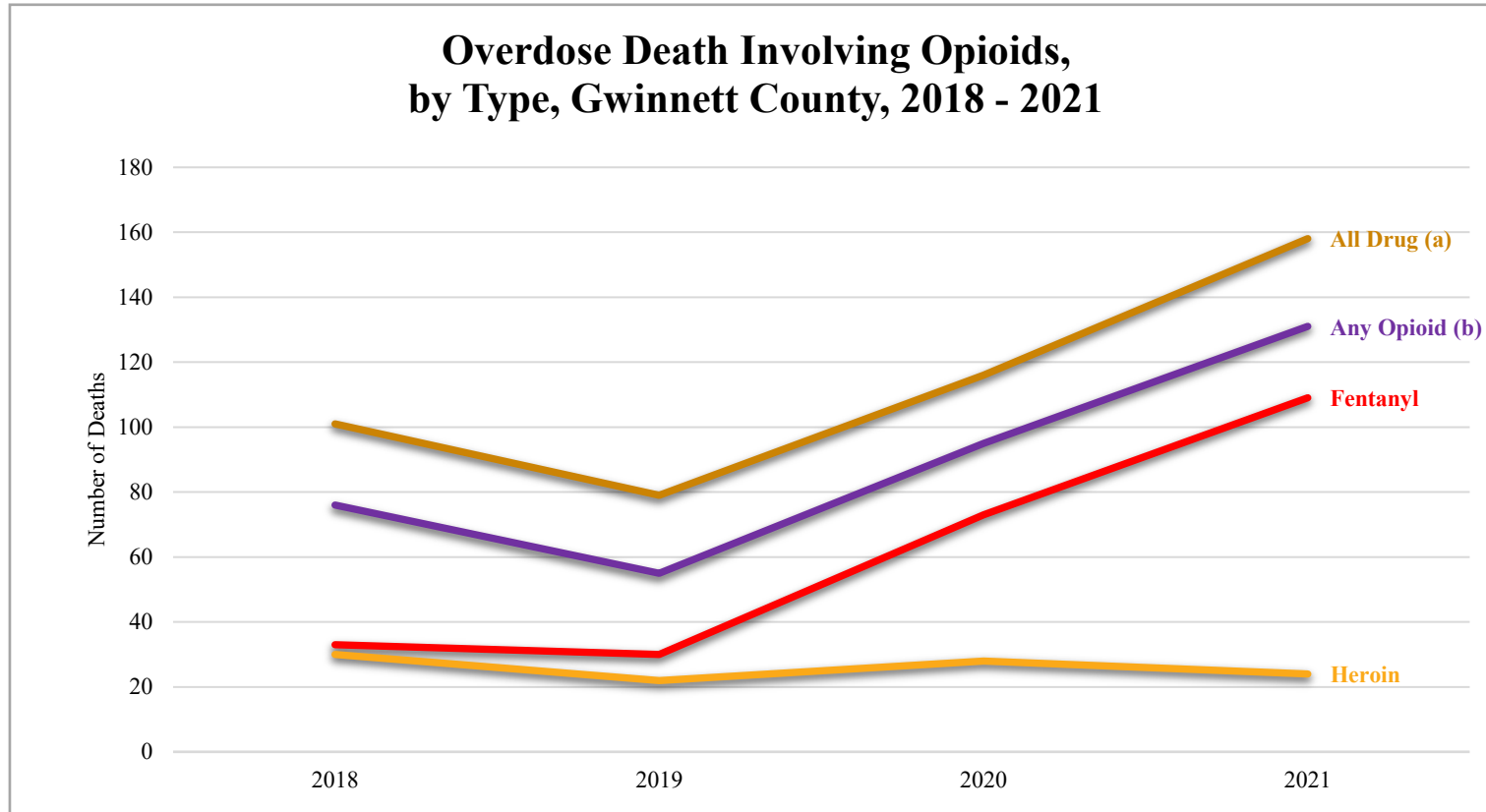


GNR
PUBLIC HEALTH

AUDREY ARONA, M.D.

CEO/District Health Director

Overdose Death Involving Opioids, by Type, Gwinnett County, 2018 - 2021



Data Sources: Georgia Department of Public Health (DPH) Vital Records death certificates. Includes deaths that occurred in Georgia, Online Analytical Statistical Information System (OASIS).

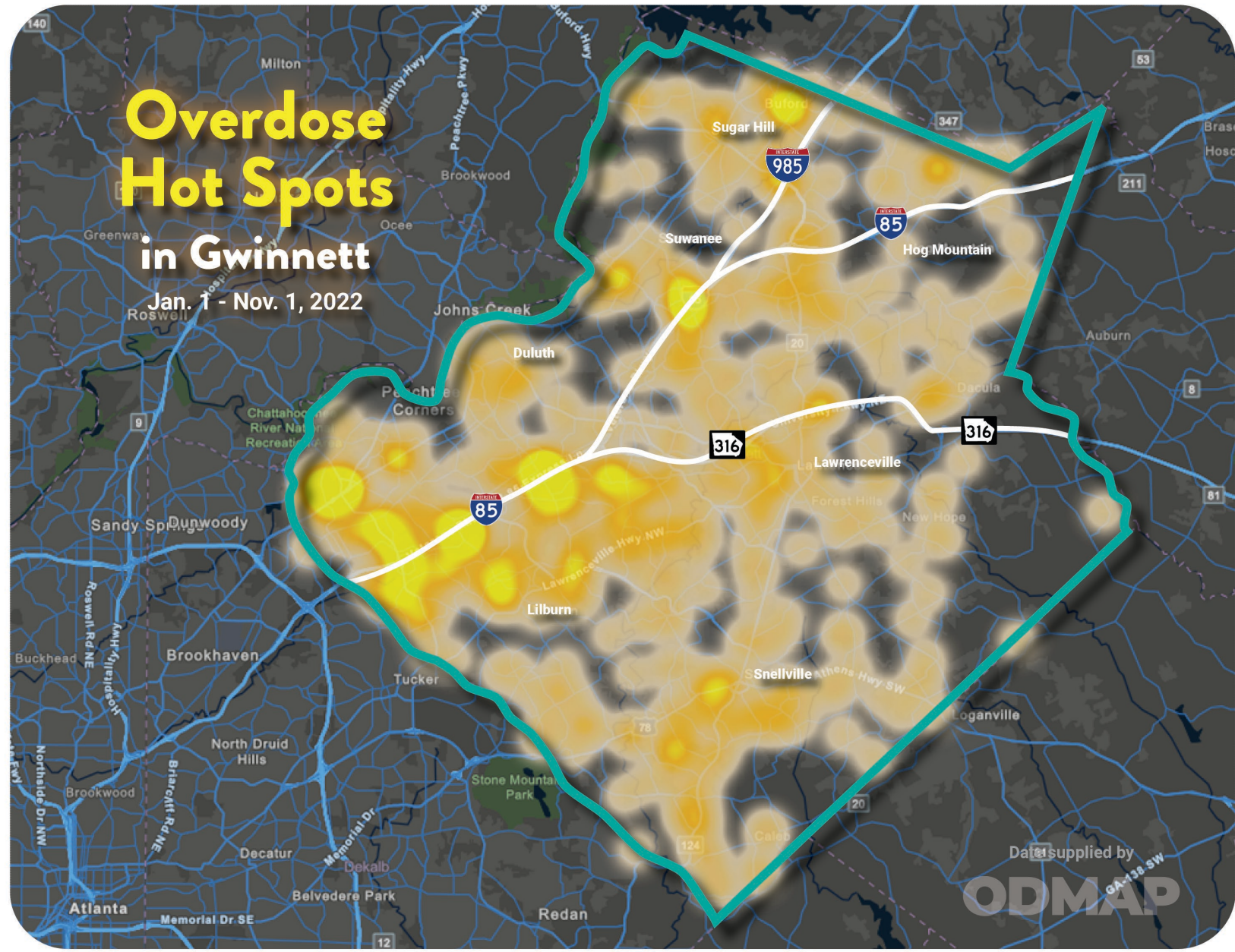
(a) All Drug Overdoses refers to overdoses caused by acute poisoning only. May involve any over-the-counter, prescription, or illicit drugs

(b) Any Opioid involves both prescription opioid pain relievers (e.g., hydrocodone, oxycodone, and morphine), opioids used to treat addiction (e.g., methadone), as well as heroin, opium, and synthetic opioids (e.g., tramadol and fentanyl that may be prescription or illicitly-manufactured).

Overdose Hot Spots

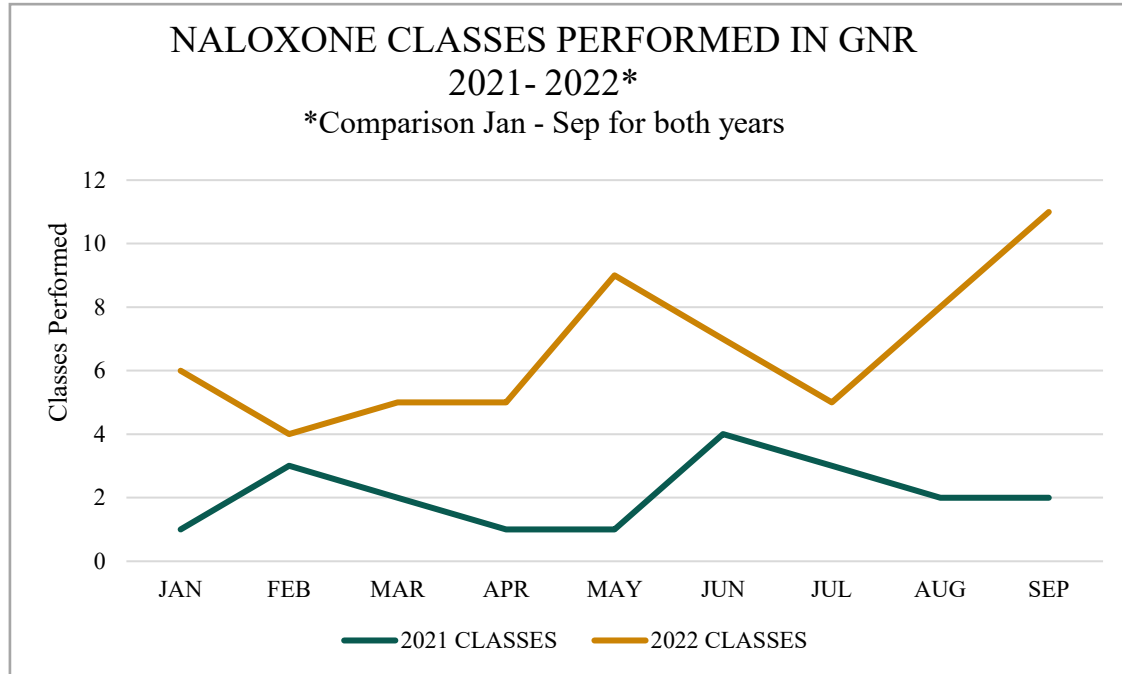
in Gwinnett

Jan. 1 - Nov. 1, 2022

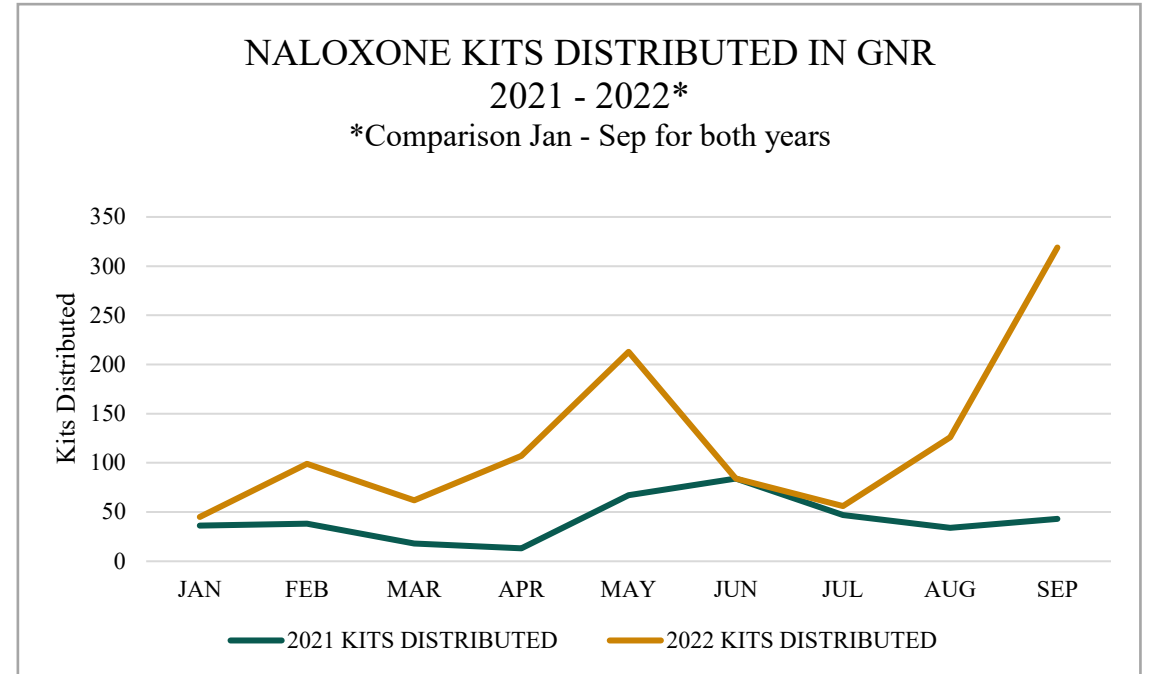


Data supplied by
ODMAP
GA-138 SW

Throughout 2022 to date, 98% of the Naloxone administered during opioid overdoses have resulted in non-fatal overdose cases.



Data Source: GNR Opioid Surveillance Program



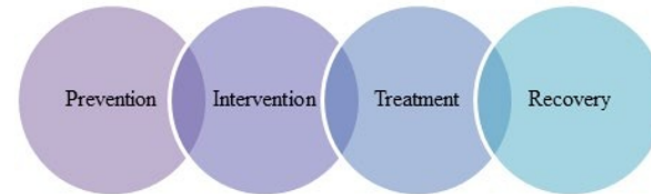
Data Source: GNR Opioid Surveillance Program



*GNR Public Health
Atlanta-Carolinas High Intensity Drug Trafficking Areas (HIDTA)
CDC Foundation
GA Dept of Public Health*

Gwinnett County Overdose Fatality Review Team

Est. 2022



Mission:

“A partnership of Gwinnett County agencies, service entities, and the community working together to reduce drug overdose deaths through prevention efforts and education in the community.”

ALL COMMUNITY PARTNERS NEEDED

- Awareness and Education
- Prevention Services Including School-Based, Youth-Focused
- Comprehensive Wrap-Around Services
- Enhance Recovery Options Including Peer-Based Programs
- Explore Diversion Programs
- Explore and Expand Treatment Programs
- Engage Non-Profits, Faith-Based Communities and Community Anti-Drug Coalitions
- Support Data Collection and Research





Questions?

Audrey Arona, M.D.

CEO/District Health Director

GNR Public Health

Cell: 678-794-4189

Email: Audrey.arona@gnrhealth.com



D·B·H·D·D

Georgia
Department of
Behavioral Health
& Developmental
Disabilities



The Partnership Center

Center for Faith-based and
U.S. Department of Health
Neighborhood Partnerships
and Human Services

**NORTHSIDE
HOSPITAL**



Piedmont
EASTSIDE

**EMORY
JOHNS CREEK
HOSPITAL**



VIEW POINT
Health



GNR
PUBLIC HEALTH

**Gwinnett
Cares**

Powered by The Gwinnett Coalition



HomeFirst

— GWINNETT —



GRIP

GWINNETT RE-ENTRY INTERVENTION PROGRAM



**LIGHTWAY
RECOVERY**
women

WE RECOVER

96,455

**R E C O V E R E D
I N G W I N N E T T**

COMMUNITY IMPACT

NAVIGATE RECOVERY GWINNETT

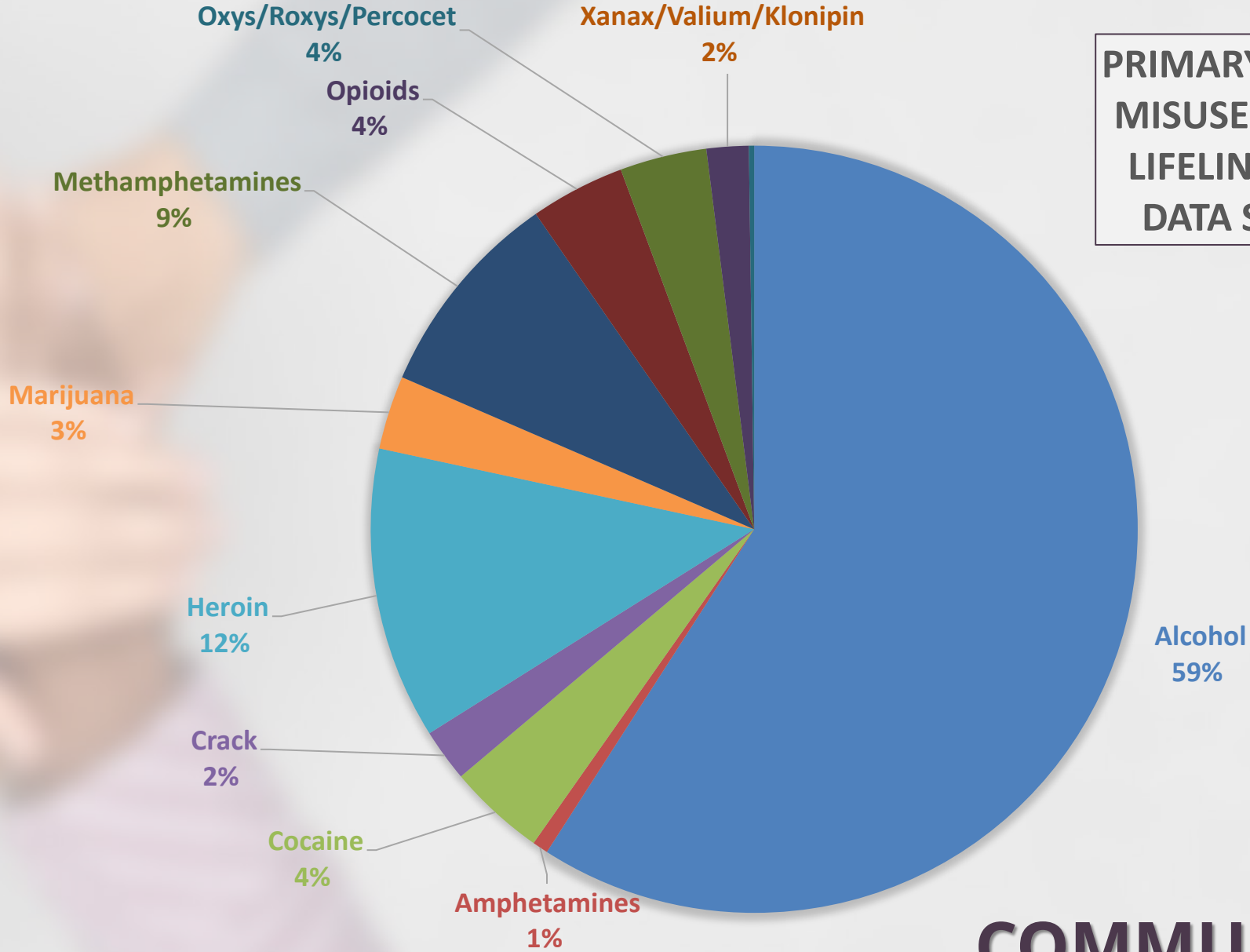
1847 HOSPITAL ED - LL

22,800 REMOTE SUPPORT - LL

20,000+ MEETINGS & EVENTS - SH

17,417+ RECOVERY ENCOUNTERS

PRIMARY SUBSTANCE MISUSED BASED ON LIFELINE HOSPITAL DATA SINCE 1918



COMMUNITY IMPACT

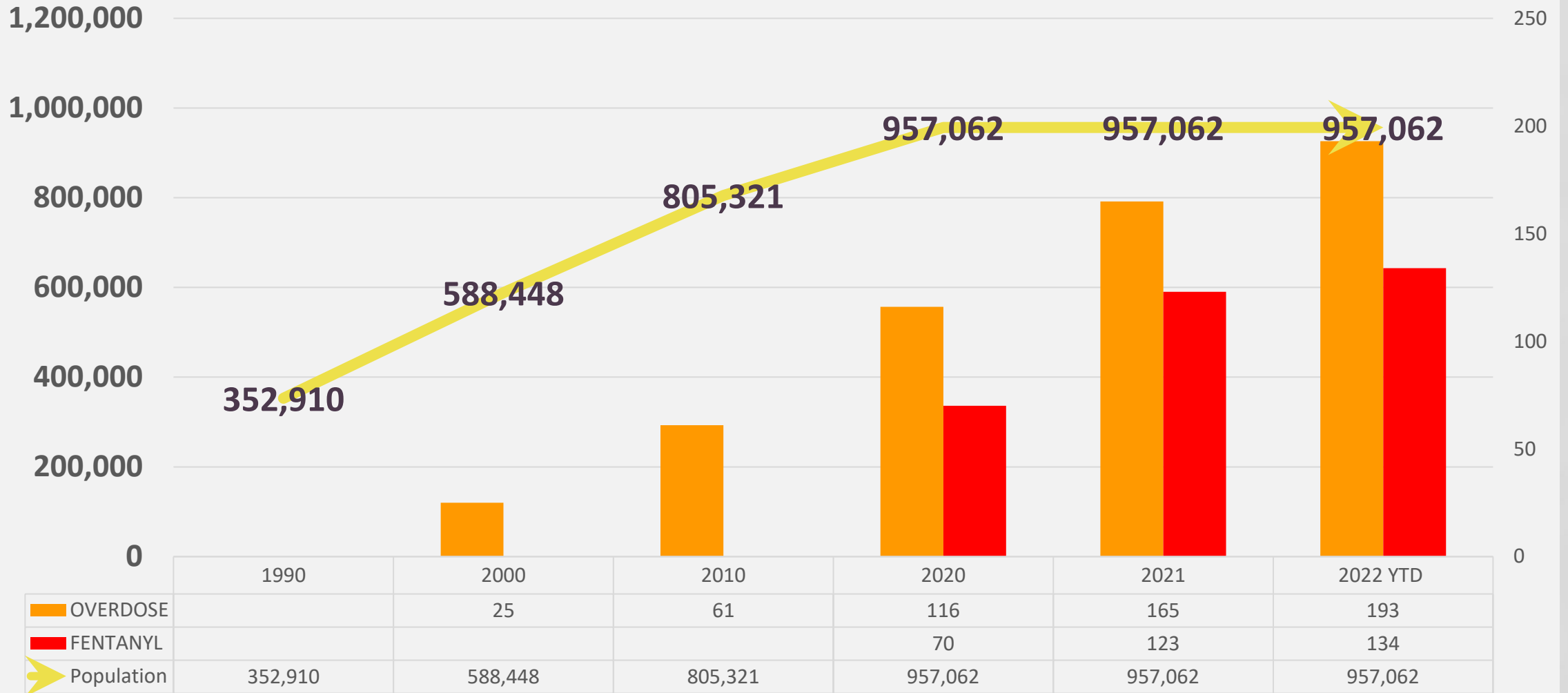
LET'S TALK SOLUTIONS

- Educate and equip community partners to engage with the public about the dangers of Fentanyl poisoning, the science of addiction and remove stigma and shame
- Provide life saving naloxone throughout the county, especially in hotspot areas
- Train and provide first responders, county employees, educators, resources officers and school nurses with naloxone
- Raise the bar for addiction recovery beyond emergency medical treatment to provide short and long term housing solutions for those seeking active recovery

LET'S TALK SOLUTIONS

- Engage with community stakeholders to develop a coordinated strategy to address the fentanyl crisis, utilizing opioid settlement dollars and other resources
- To minimize unnecessary overlap in services, streamline and deliver cost effective solutions that meet community needs now and in the future
- Collect data and distribute to front line stakeholders to target hotspots in our community
- On-going education with stakeholders to keep abreast of current trends and challenges to our Gwinnett community

GROWTH IN GWINNETT COUNTY POPULATION FROM CENSUS DATA 1990 – 2020 OD DATA GPH OASIS



■ OVERDOSE
 ■ FENTANYL
 ➤ Population