



GWINNETT COUNTY
BOARD OF COMMISSIONERS

75 Langley Drive | Lawrenceville, GA 30046-6935
O: 770.822.7000 | F: 770.822.7097
GwinnettCounty.com

Nicole L. Hendrickson, Chairwoman
Kirkland Dion Carden, District 1
Ben Ku, District 2
Jasper Watkins III, District 3
Matthew Holtkamp, District 4

Official

Informal Presentation Minutes

Tuesday, February 21, 2023 – 11:00 AM

Present: Nicole L. Hendrickson, Kirkland D. Carden, Ben Ku, Jasper Watkins III, Matthew Holtkamp

1. Police Services

Police Department Overview

Police Chief J.D McClure provided the Board an overview of the Police Department's services, organizational structure, and future growth. No official action taken.

Police Department

J.D. McClure
Chief of Police



Mission Statement

Mission Statement

The Gwinnett County Police Department is committed to serving the community through the delivery of professional law enforcement services in an unbiased and compassionate manner in order to protect the lives and property of the citizens and improve the quality of life in our community.

Core Values

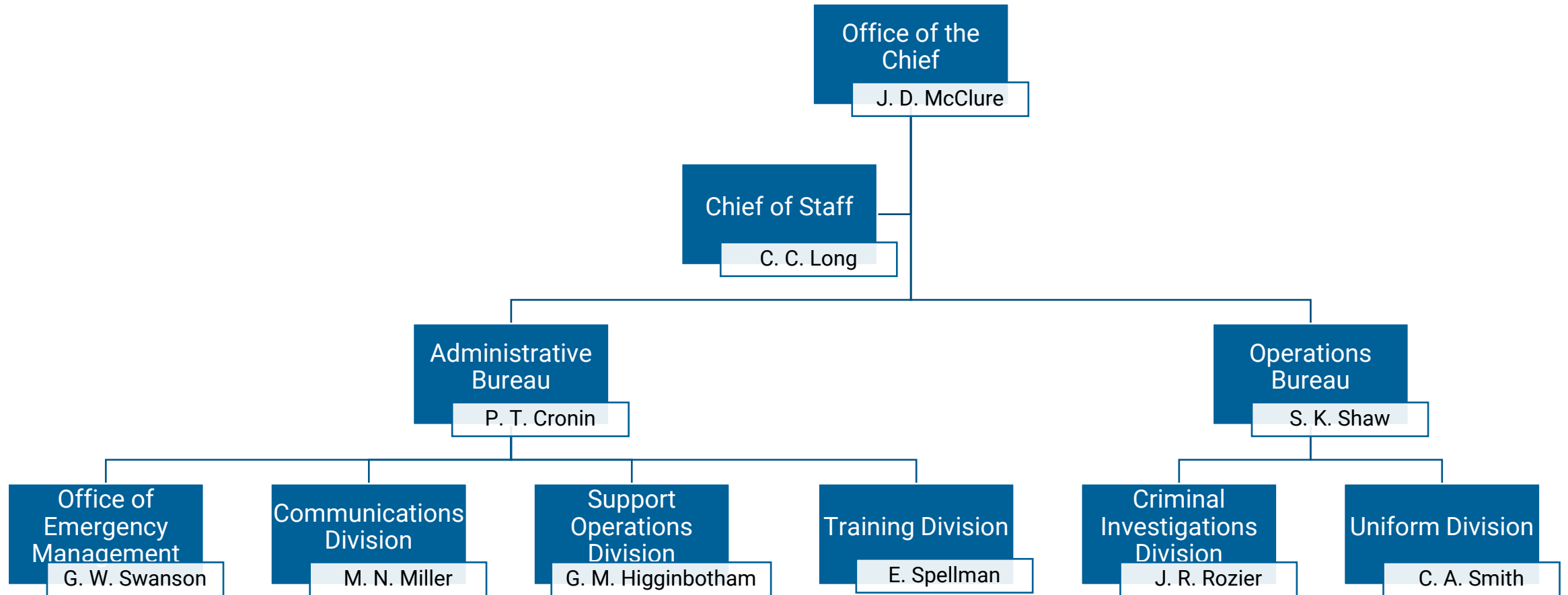
- **Integrity** - We are committed to achieving the public's trust by holding ourselves accountable to the highest standards of professionalism and ethics.
- **Courtesy** - We will conduct ourselves in a manner that promotes mutual respect with the community and our peers.
- **Pride** - We are committed to conducting ourselves in a manner that brings honor to ourselves, our department and the community we serve.
- **Professional Growth** - We are committed to developing future leaders through training and education.

Department Overview

- Authorized 1,226 employees
 - 939 authorized sworn officers
 - 317 authorized professional staff
- Second largest full-service police department in Georgia
- CALEA accredited since 1993 and awarded the Gold Standard of Excellence in 2016 and awarded the Tri-Arc Accreditation Award in 2021
- Georgia certified law enforcement agency since 1999



Organizational Structure



Connectivity



Core Services

- Respond to 911 calls for service and conduct preventive patrol
- Enforce State laws and County ordinances
- Traffic enforcement and control
- Provide tactical response to critical incidents



Core Services

- Conduct criminal investigations
- Provide scientific crime scene processing
- Safeguard evidence and property





Core Services

- Receiving emergency and non-emergency calls
- Dispatch of fire, police, and EMS units
- Security and management of police records

Core Services

- County-wide emergency management services, including local Cities
- Police Academy for police and communications officers
- In-service training all sworn and professional staff



Community

- Building and enhancing community relationships and trust
- Responsibility of the entire organization



Emerging

- Response to mental health
- Growth
- Technology
 - Situational Awareness Crime Response Center
 - National Integrated Ballistic Information Network





Impact

- Employee Wellness
- Retention
- Service Delivery

Thank You!

•Questions?

