



GWINNETT COUNTY
BOARD OF COMMISSIONERS

75 Langley Drive | Lawrenceville, GA 30046-6935
O: 770.822.7000 | F: 770.822.7097
GwinnettCounty.com

Nicole L. Hendrickson, Chairwoman
Kirkland Dion Carden, District 1
Ben Ku, District 2
Jasper Watkins III, District 3
Matthew Holtkamp, District 4

Official

Informal Presentation Minutes

Tuesday, January 16, 2024 – 11:00 AM

Present: Nicole L. Hendrickson, Kirkland Carden, Ben Ku, Jasper Watkins III, Matthew Holtkamp

1. Community Services

Parks and Recreation Comprehensive Plan and SPLOST Projects Update

Community Services Division Directors Chris Minor and Glenn Boorman provided the Board with an update on the Parks and Recreation Master Plan and discussed current and future projects. No official action taken.

Parks & Recreation Master Plan & Project Updates

Community Services
January 16, 2024



Gwinnett



Gwinnett Standard

- Commission for Accreditation of Park and Recreation Agencies
- Gold Medal Finalist – National Recreation and Park Association
- Program of the Year – Association of Aquatic Professionals
- Achievement Award Winner – National Association of Counties
- District 7 Agency of the Year – Georgia Recreation and Park Association









anywhere
A Shirley Carver Miller Early Learning Initiative

Way To Unleash



The earth being round, the sea was in the middle.

"And I be the maddest, maddest,"
said the merchant, "I'll not
leave for a rope like you!"

"Rogue, am I?" said the
sea, "back to sea!"

"Grog swiller,"
"Edge rat,"
"Landlubber,"
"Sea skink,"
"Gentleman,"
"Lady,"

"Ahey and ayeah!" cried the sea, "Swing
aside and let me pass."
"Swing yerself, ye scurvy dog!" said the
merchant right back.
But the sea thought, he wasn't used to back talk.

HARRIS GREENWAY TRAIL



Gwinnett
TRAILS



PARK RULES



Place litter and pet waste in trash receptacles



Keep pets leashed and under control



Permit is required for organized groups, use of drones, commercial activity, and amplified sounds



Fires restricted to park grills and fire rings



Alcohol, tobacco products, and drugs prohibited



Feeding or harassing of wildlife is prohibited



VANDALISM

Removing, destroying, or defacing any park property is prohibited



No swimming, bathing, or wading except in designated areas



Report maintenance or safety concerns to Parks@GwinnettParks.com



Call or text 911 for emergency assistance



Scan for a complete list of park rules

GWINNETTPARKS.COM



Gwinnett Parks and Recreation · Follow

August 22, 2023 · 🌐

Looking for an outdoor adventure this [#TrailsTuesday](#)? Check out the Ivy Creek Greenway in the Buford area for a beautiful trail featuring scenic views of waterfalls, a wildlife observation area, and a picnic pavilion. This trail is one of our must-visit [#GwinnettTrails](#), a signature trail in our master plan, and a hidden gem near the Mall of Georgia!



Gwinnett Parks and Recreation

July 13, 2023 · 🌐

Safe and inclusive spaces for children are [#WhereCommunityGrows!](#) Have you been to our newly updated playground at Bay Creek Park? This accessible playground offers a variety of fun activities for children of all ages and abilities. Kids can enjoy new equipment like double swings, a circular ramp system, a large wheelchair accessible spinner and rocker, and so much more. The new updates also include a new smaller playground with a more active theme, including an obstacle course for older children and young adults. [#GwinnettGoldMedal](#) [#ParkAndRecMonth23](#)





Gwinnett Parks and Recreation · Follow

June 12, 2023 · 🌐



Become a lifeguard and receive free training! Join our team for a flexible schedule and competitive pay, starting at \$16.50 an hour. Training classes start soon. Visit [Bit.ly/GCLifeguardJobs](https://bit.ly/GCLifeguardJobs) to apply.



Gwinnett Parks and Recreation

February 28, 2023 · 🌐



We're seeking part-time program leaders for the Building Brains Anywhere afterschool program! Gain rewarding experience working at sites around Gwinnett, and earn competitive pay. For more information or to apply, visit GCGA.us/B2ProgramLeader.



[GCGA.US/B2PROGRAMLEADER](https://GCGA.us/B2ProgramLeader)

Building Brains Leader

We're hiring part-time program leaders!



Apply now

Enhance Convenience and Accessibility

- Decision Packages
- Park Districts
- Program Hubs and Spokes
- Program Gaps
- Amenity Accessibility









Protect, Provide Access, and Sensitively Program Natural Areas

- Conservation Easements
- Environmental Stewards
- Wildlife Management





Facility/Amenity and Program/Activity Investments

- Responsive Programming
- 6,000+ Programs Annually
- Therapeutic Recreation
- Planning Focused
- SPLOST Support







AND OUR CHILDREN'S LIFETIME.
THE HEALTH OF OUR WATERS
IS THE PRINCIPAL MEASURE OF
HOW WE LIVE ON

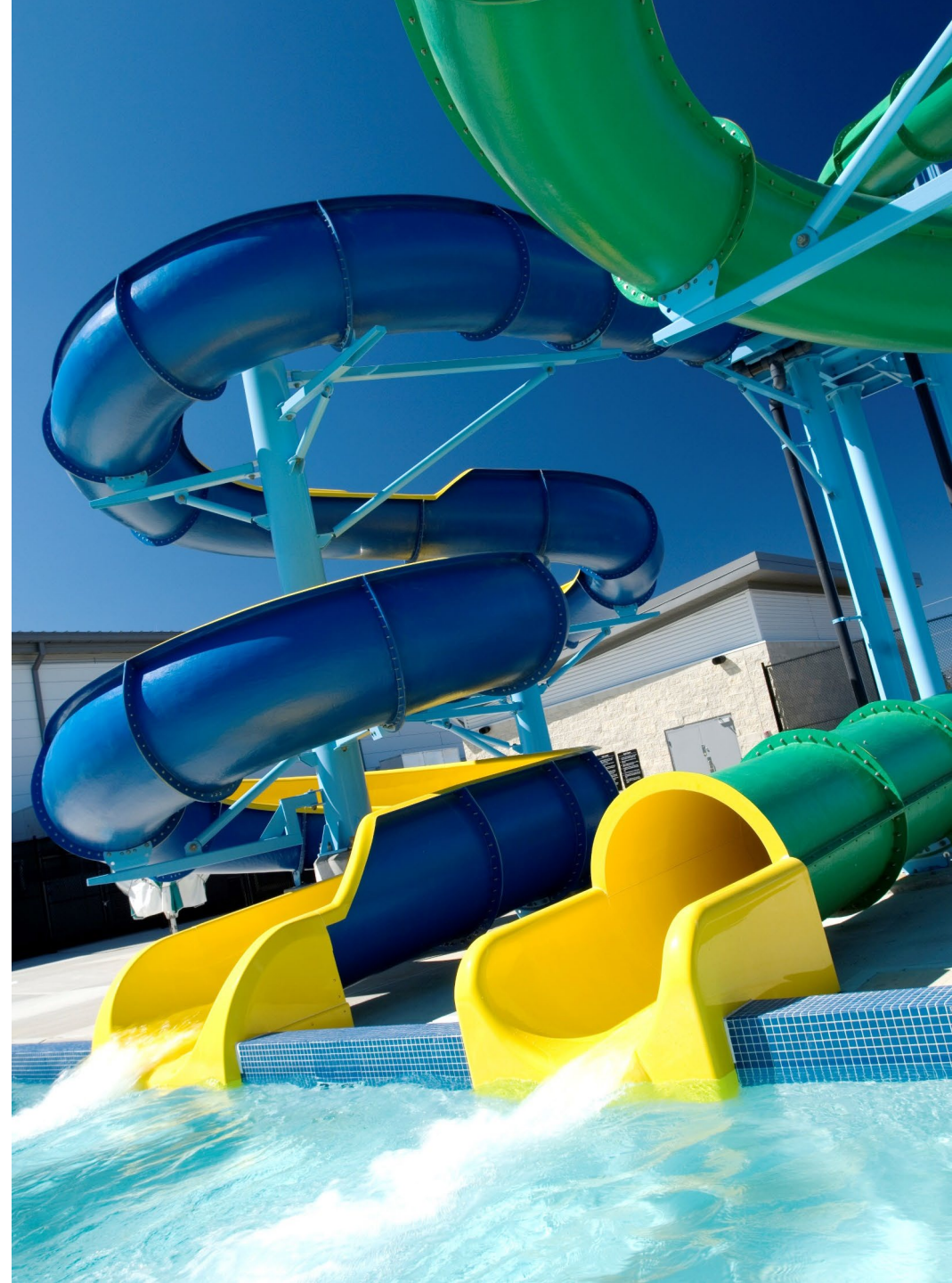
PROFESSOR LUNA B. LEON
RIVER AND WATERSHED
U.S. GEOLOGICAL SURVEY

FINALIST
NATIONAL GOLD MEDAL AWARD
EXCELLENCE IN WATER QUALITY
AND RECREATION MANAGEMENT

Gwinnett
Partners in Progress

Project Update

- Asset Management of Existing Facilities
- 2017 SPLOST Projects
- 2023 SPLOST Projects
- Future Planning

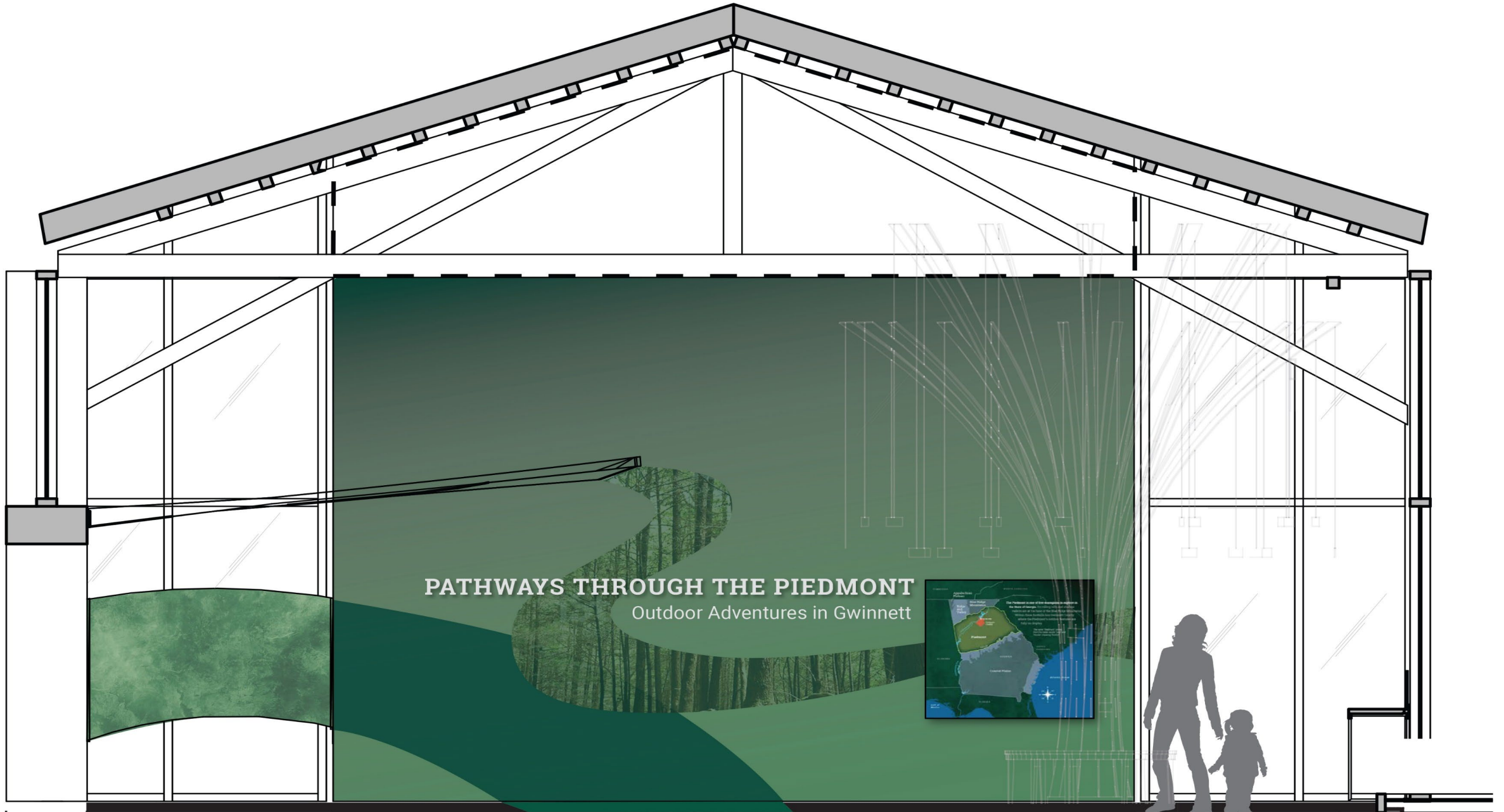


Management and Updating of Existing Facilities Gwinnett Environmental & Heritage Center

- Sensory Treehouse and Exhibits
- Roof Renovations
- Pathways Through the Piedmont Exhibits
- Outdoor Classroom, Restroom, Entrance Drive Realignment, and Parking Lot Improvements
- Blue Planet Repair and Film Update







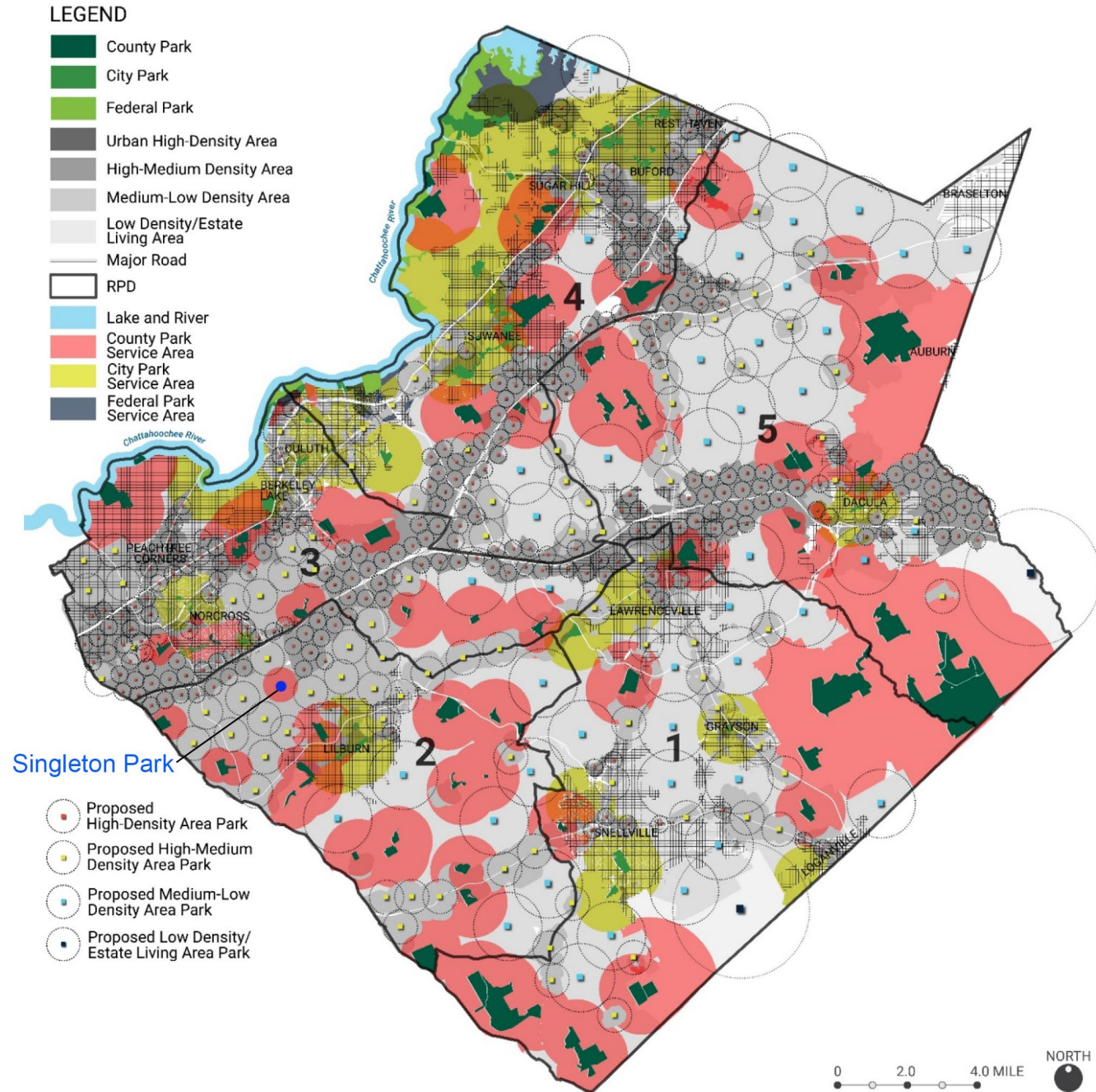
PATHWAYS THROUGH THE PIEDMONT
Outdoor Adventures in Gwinnett



Management and Updating of Existing Facilities

- Bay Creek Park – Multipurpose Field Turf Replacement
- Best Friend Park – Playground Renovations
- George Pierce Park
 - Multipurpose Field Turf Replacement
 - Playground Renovation

Figure 3.2.3c – Existing Areas Served by Parks and Areas in Need of Parks





SINGLETON ROAD
(R/W VARIES)

PARKING

GRASS PLAY AREA

RESTROOM

SHADE SAILS
WITH SEATING

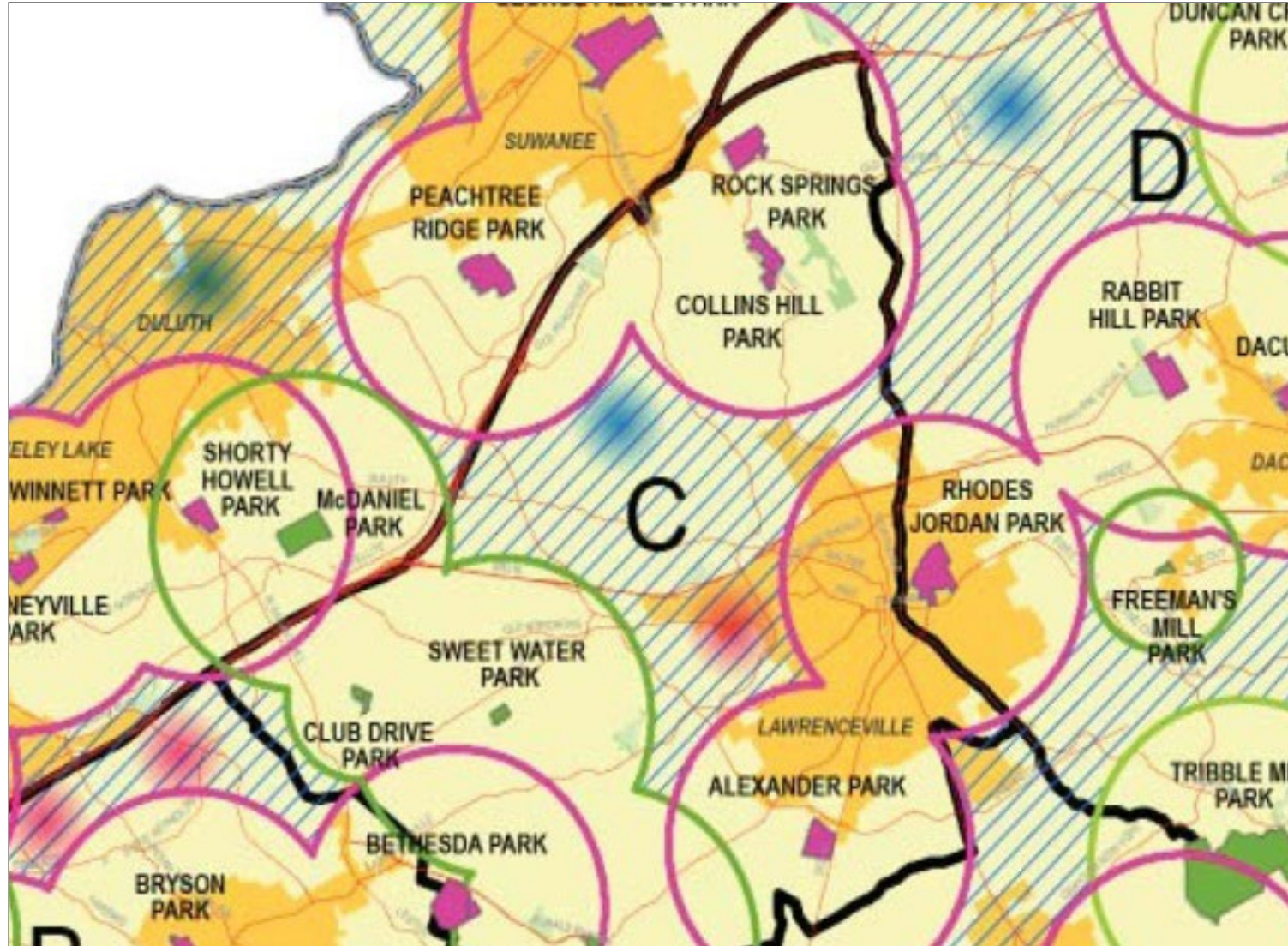
PLAYGROUND

12' GREENWAY TRAIL

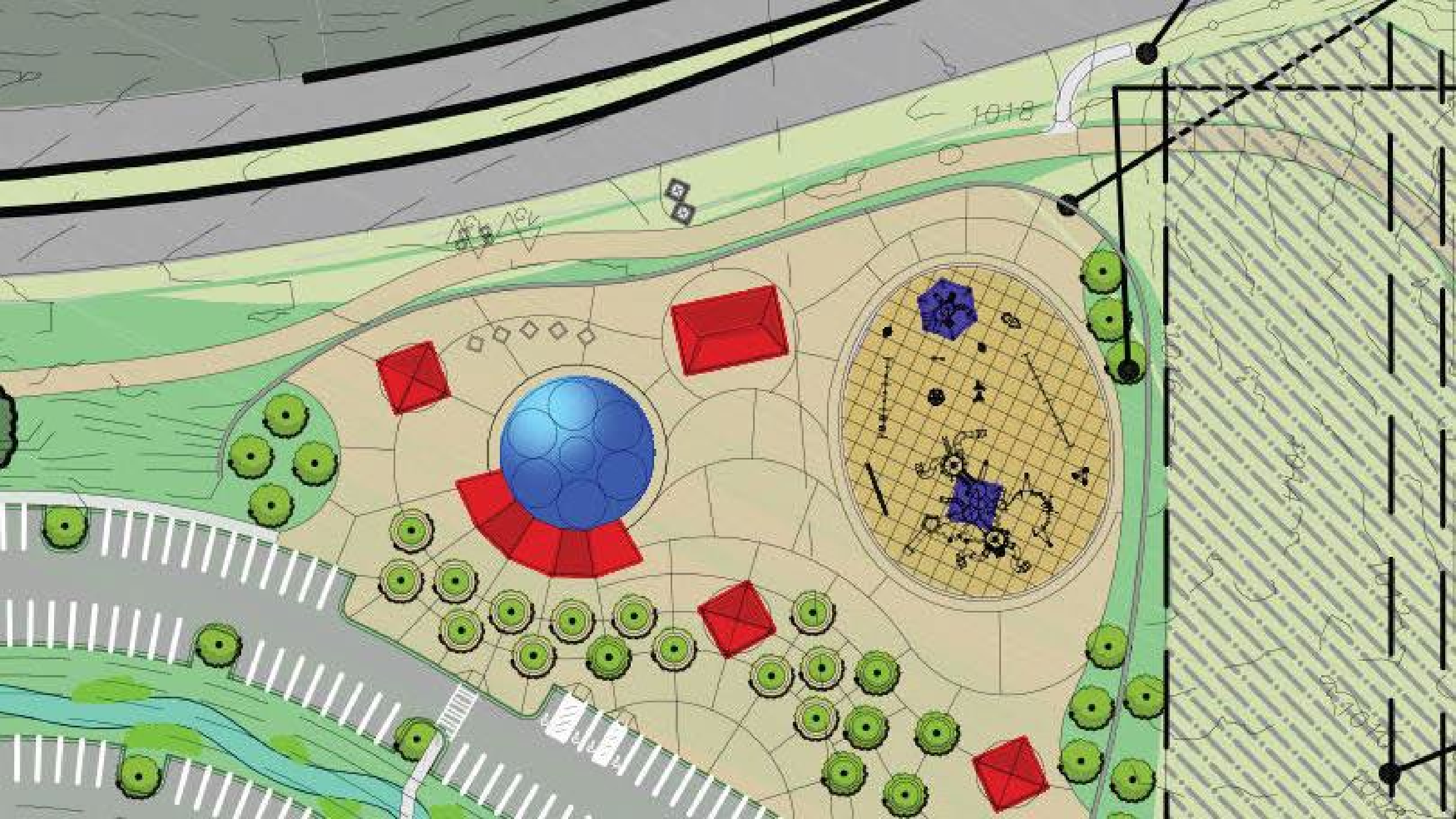
1/4 MILE TRAIL LOOP

POTENTIAL
NEIGHBORHOOD
CONNECTION

Discovery Park- Gap Analysis







Interactive Fountain



Projects with the Department of Water Resources

- Jones Bridge Park – Stream Restoration
- Tribble Mill Park and Rhodes Jordan Park – Dam Projects
- Peachtree Ridge Park – Lake Luella Dam
- Eastern Regional Greenway Trail
- Beaver Ruin Wetland Park



Lenora Park

- Renovations of the existing multi-purpose field, gymnasium, parking lot, and dog park
- Construction of outdoor basketball courts, press box and maintenance building
- Construction of a community recreation center





WELCOME

Gwinnett
virtuallyconnected.

Dacula Park Activity Building Expansion

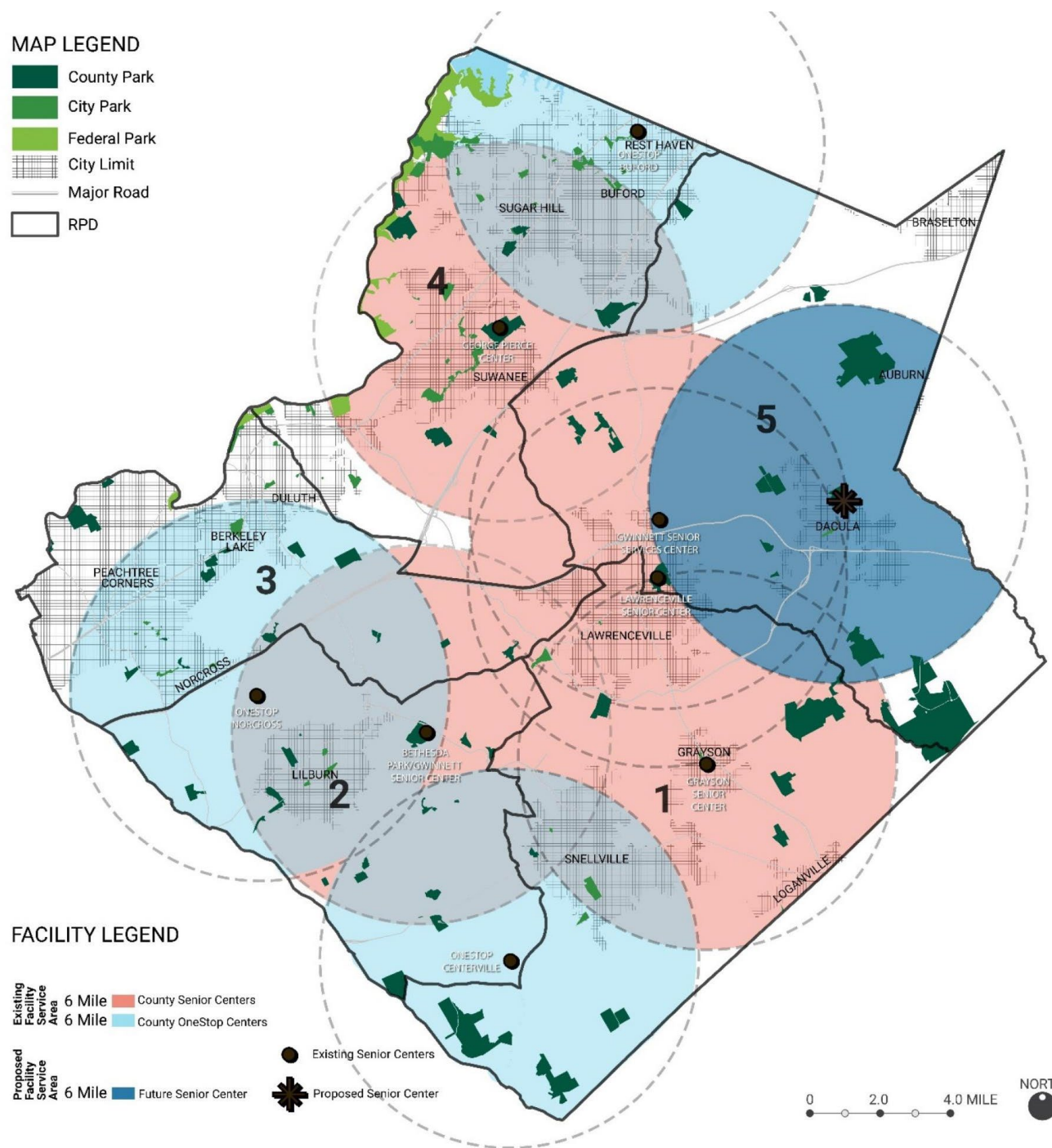
- Hybrid facility between Parks and Recreation and Health and Human Services
- Addition of gymnasium, activity rooms, pottery studio, and senior services facilities
- Renovation of community room
- Additional parking and site work connections

MAP LEGEND

- County Park
- City Park
- Federal Park
- City Limit
- Major Road
- RPD

FACILITY LEGEND

- Existing Facility Service Area 6 Mile
- Existing Facility Service Area 6 Mile
- Proposed Facility Service Area 6 Mile
- County Senior Centers
- County OneStop Centers
- Future Senior Center
- Existing Senior Centers
- Proposed Senior Center





Dacula Activity Building



Gwinnett Trails Master Plan Update

- Collaboration with the Department of Transportation
- Gwinnett cities, community improvement districts, and other stakeholders will be involved
- Process is expected to take one year
- Update will include an inventory of sidewalks along arterial and collector streets

Piedmont Pathway Scoping Study

- Signature Trail
- 26-Mile connection from Dekalb County to Barrow County
- Community input received and compiled from residents, leadership from the cities of Norcross, Lawrenceville, and Dacula; community improvement districts; and the Rowen Foundation







Projects in the Planning Stage for Future Community Input

- Simpsonwood Park Masterplan Update
- Livsey Family Big House Restoration
- Palm Creek Park Site Master Planning

2023 SPLOST Future Funded Projects

- Vines Park Phase II
- Sweet Water Park Phase II
- Centerville Park



Questions?

GwinnettParks.com
770.822.8840



Gwinnett

